

Welcome home to Palazzo Condominiums, where everything is gulf front.

Discover Palazzo, Panama City Beach's newest condominiums strategically situated on the west end of the town's dazzling white sandy beaches and crystal clear emerald Gulf waters. Unlike any other, Palazzo is low density, offering a limited 129 private beach residences, all taking advantage of the gorgeous aquamarine views and tranquil sea breezes of the Gulf of Mexico.

This first class resort has a magic all its own. You'll be delighted by the elegant, comfortable and very spacious 1, 2, and 3 bedroom floor plans complimented by thoughtful interior touches that are simply astounding.

A complete destination, Palazzo offers an impressive array of gulf front amenities putting it in a class by itself. Enjoy the elevated tropical gulf front pool and spa, a decorative waterfall feature, full fitness center, conference center, on-site management offices and covered gulfside parking for the enjoyment of all. Whether it be a relaxing day in the brilliant sunshine of the beach, a cool dip in the refreshing pool, or perhaps a light workout in the gulf front fitness center, you'll love the carefree beauty that Palazzo has to offer.

With its beautiful architecture and exquisite beaches, Palazzo is the perfect destination you'll enjoy for a lifetime.

PROPERTY AMENITIES

- Low density, only 129 units directly on 220 ft. of the Gulf of Mexico
- Choice of five floorplans, all gulf front
- 1 bedroom/2 bath (with bunk area) 1,026 sf.
- 2 bedroom/2 bath (with bunk area) 1,345 sf.
- 3 bedroom/3 bath (interior unit) 1,475 sf.
- 3 bedroom/3 bath (east end unit) 1,849 sf.
- 3 bedroom/3 bath (west end unit) 1,874 sf.

- Elevated gulf front heated pool and spa
- Gulf front fitness center overlooking pool deck and gulf
- Gulf front water feature
- Large gulf front lobby with on-site check-in and management
- Gulf front parking for all units (172 covered spaces on south side) plus additional guest parking
- Three high speed elevators
- Meeting room

Palazzo Resort Condominium is located at the site of the former Island Breeze Motel (directly across from Boar's Head Restaurant) on the west end of Panama City Beach. It is approximately 1 mile west of Highway 79 on Front Beach Road at 17281 Front Beach Road, Panama City Beach, Florida 32413

INTERIOR UNIT FEATURES

- Decorative ceramic tile in foyer, kitchen, and all baths

KITCHEN

- Kitchen features GE Profile® or equivalent appliances including:
 - Refrigerator with icemaker
 - Self-cleaning oven/range
 - Dishwasher
 - Microwave oven
 - Washer and dryer
- Raised panel kitchen cabinetry
- Granite kitchen countertops

LIVING ROOM

- 9' ceilings with 9' sliding glass doors in all units
- 10' ceiling on top floor penthouses and 1st floor
- Crown molding in living areas and master bedroom suites
- Wired for high speed access
- Ceiling fans in living areas and master bedroom suites
- Fully carpeted bedrooms and living areas

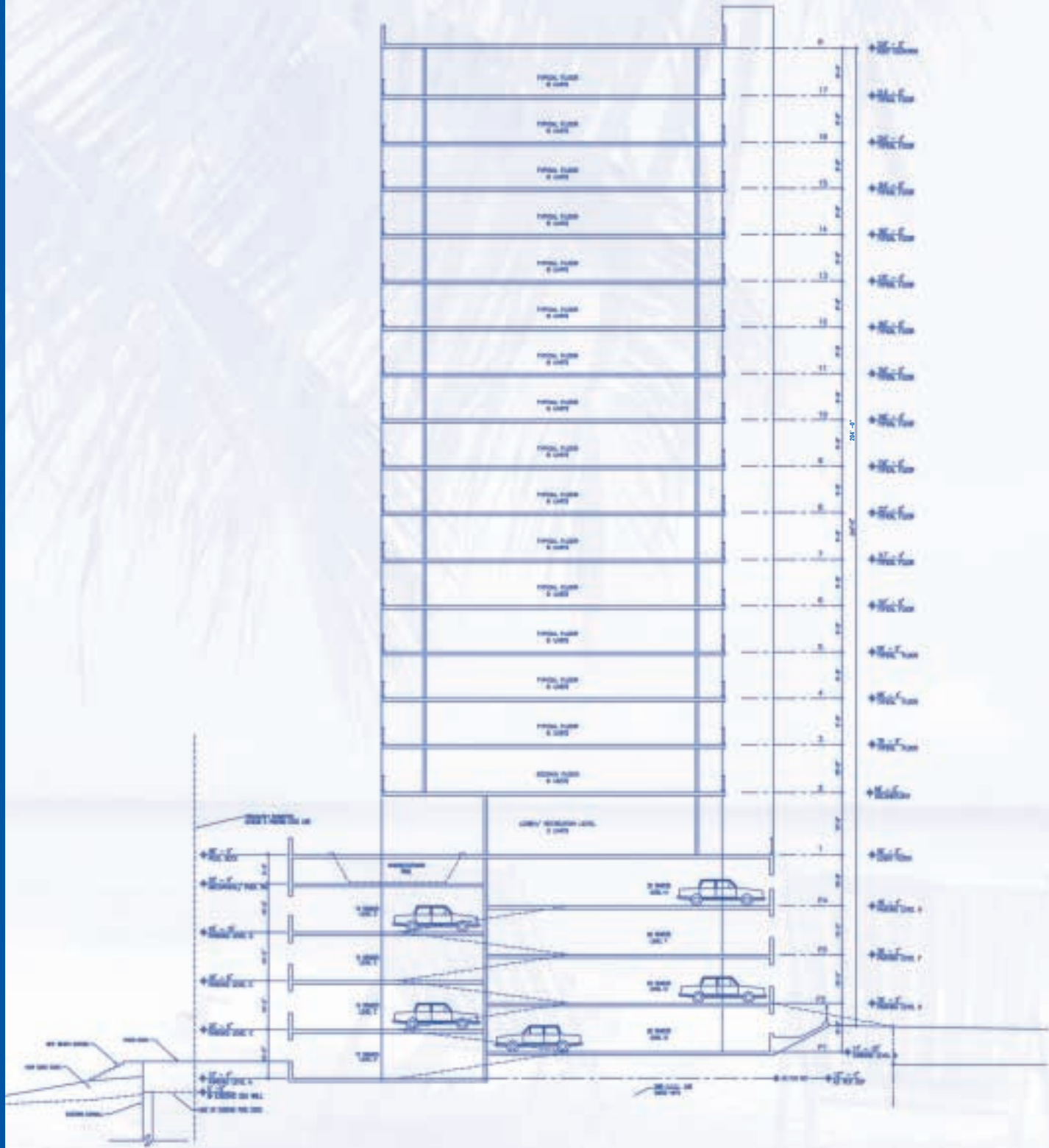
BATHS

- Cultured marble countertop in all baths
- Garden tub and separate shower featured in all units

- 44 external owners storage sold separately



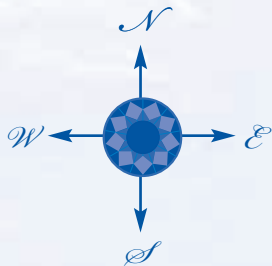
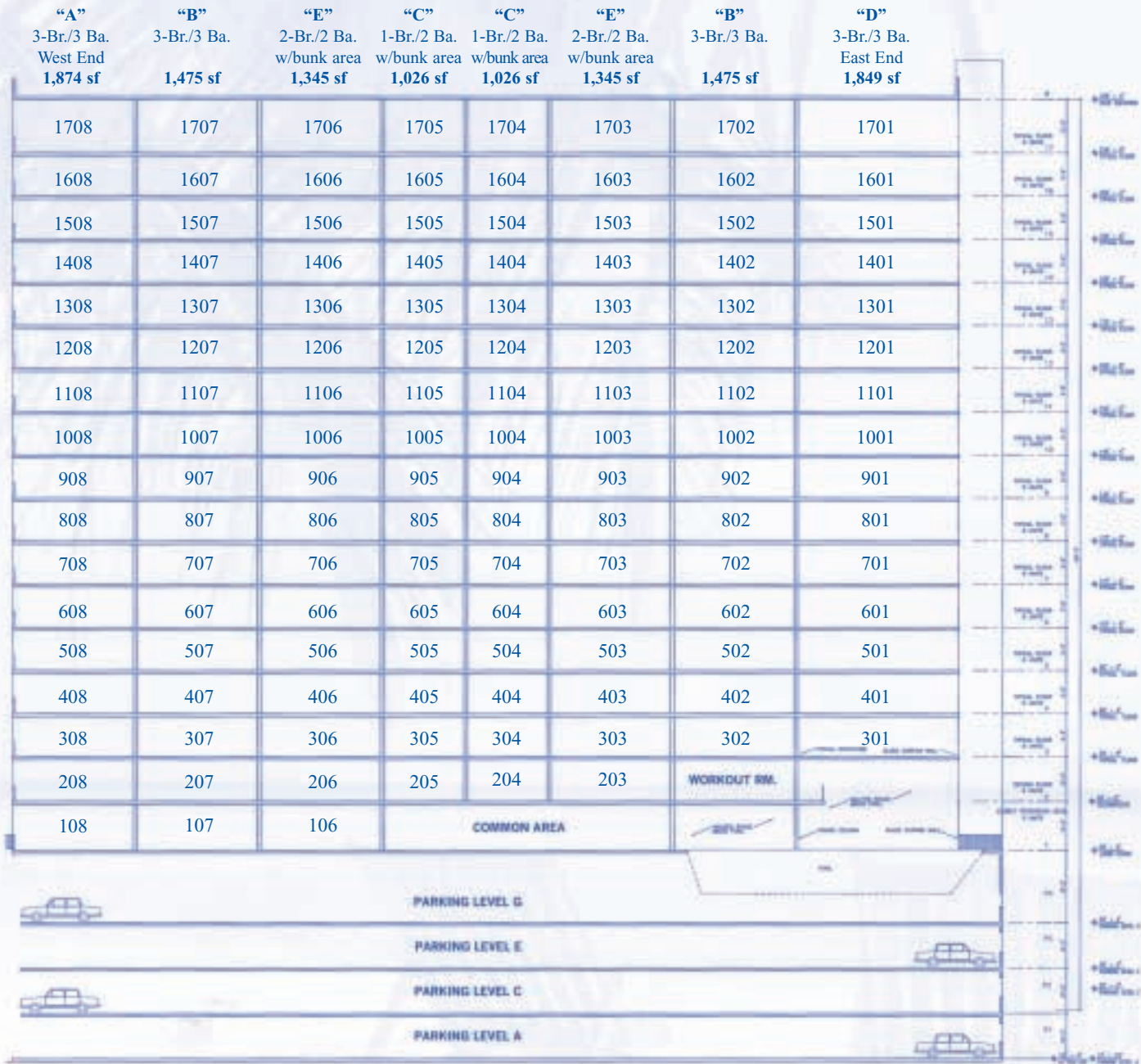
SCHEMATIC BUILDING SECTION




All dimensions and items listed are subject to change without notice.
Developer reserves the right to make any modifications as it deems necessary.

CONDOMINIUMS • PANAMA CITY BEACH, FL

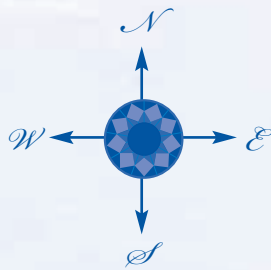
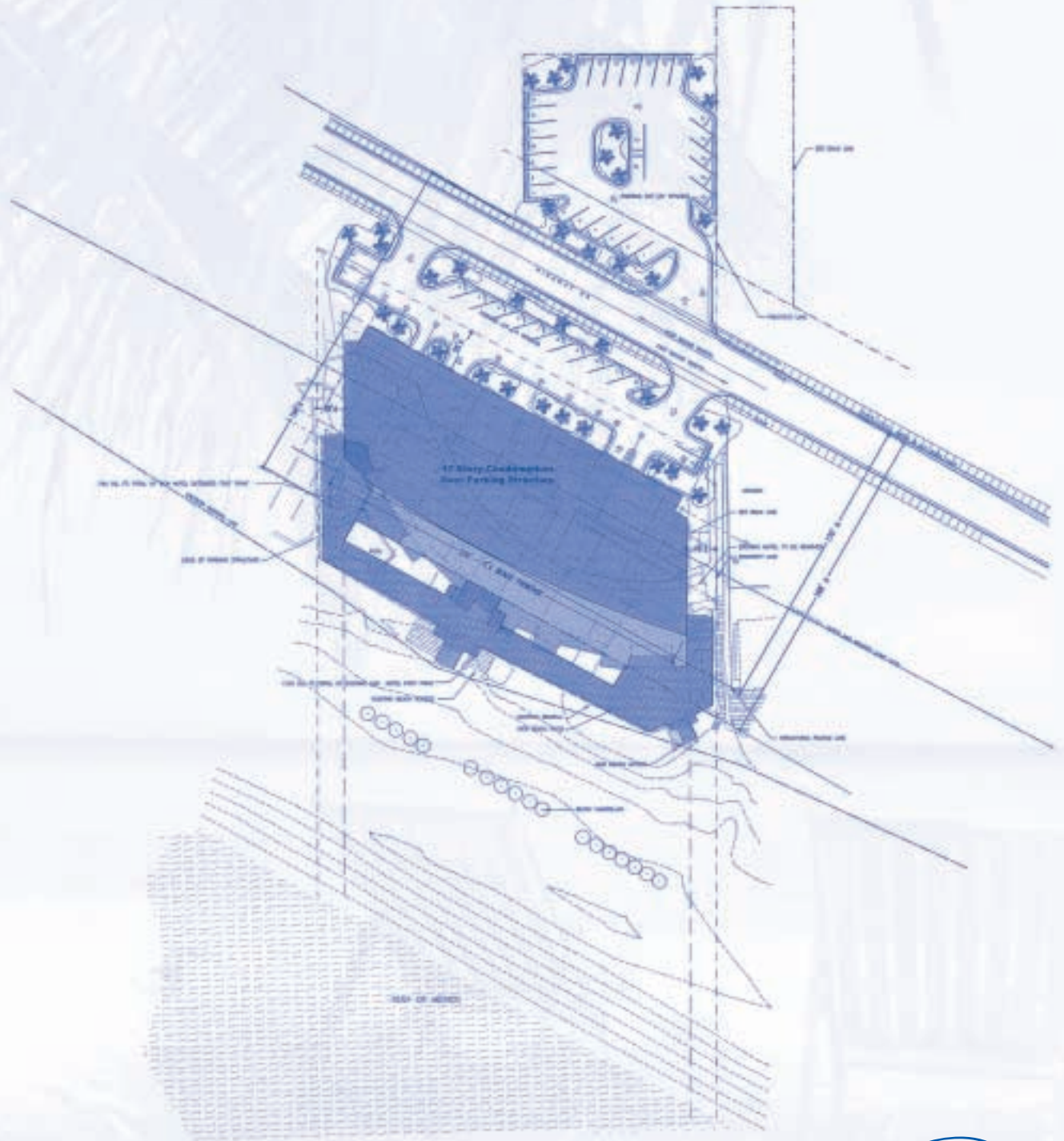
BUILDING LAYOUT



 All dimensions and items listed are subject to change without notice. Developer reserves the right to make any modifications as it deems necessary.

CONDOMINIUMS • PANAMA CITY BEACH, FL

OVERALL SITE PLAN



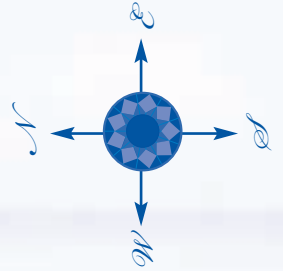
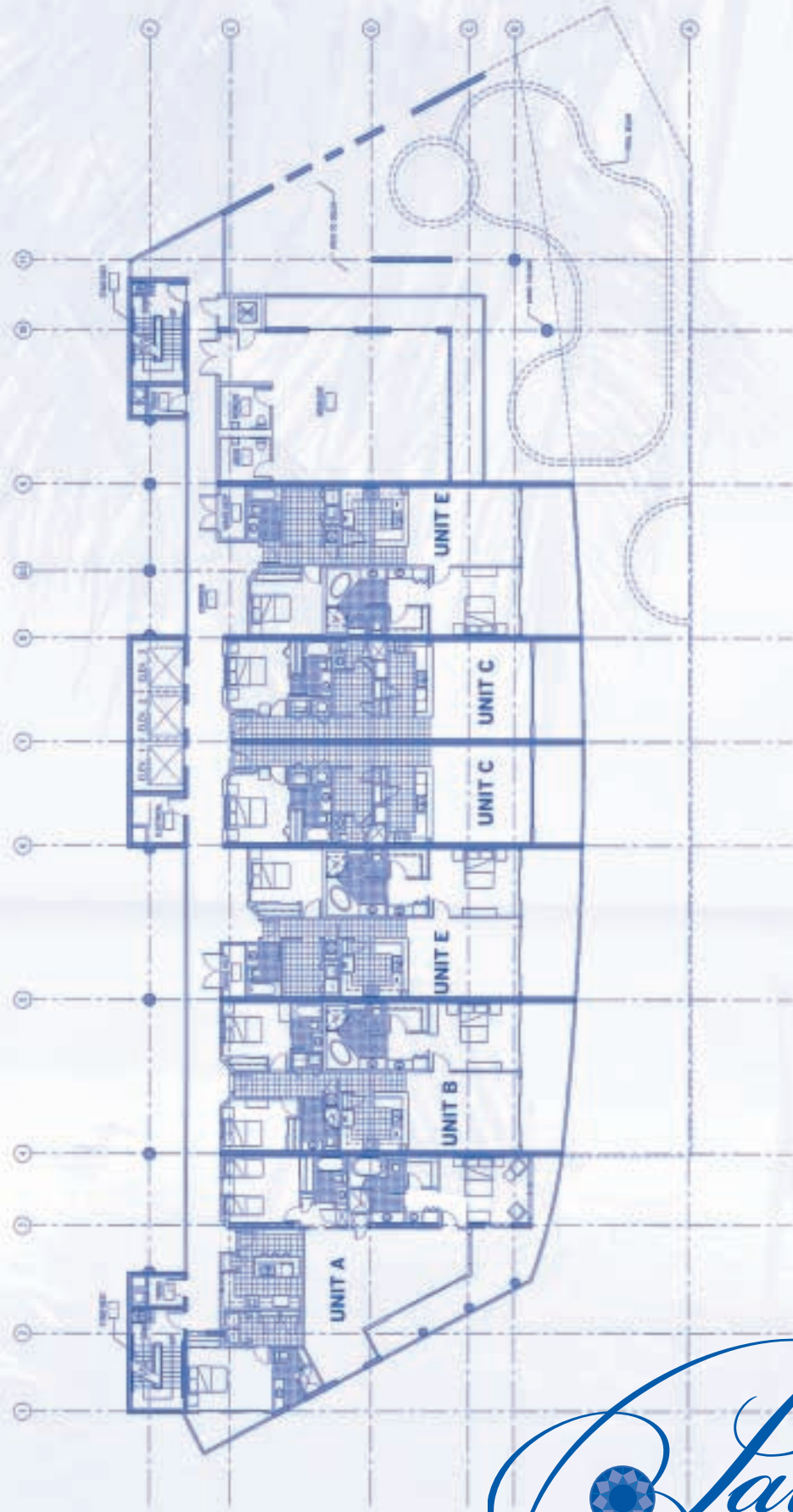
Palazzo



All items listed and dimensions are approximate and subject to change without notice. Developer reserves the right to make any modifications as it deems necessary.

CONDOMINIUMS • PANAMA CITY BEACH, FL

2ND FLOOR PLAN



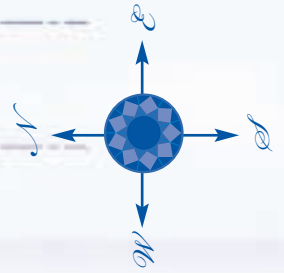
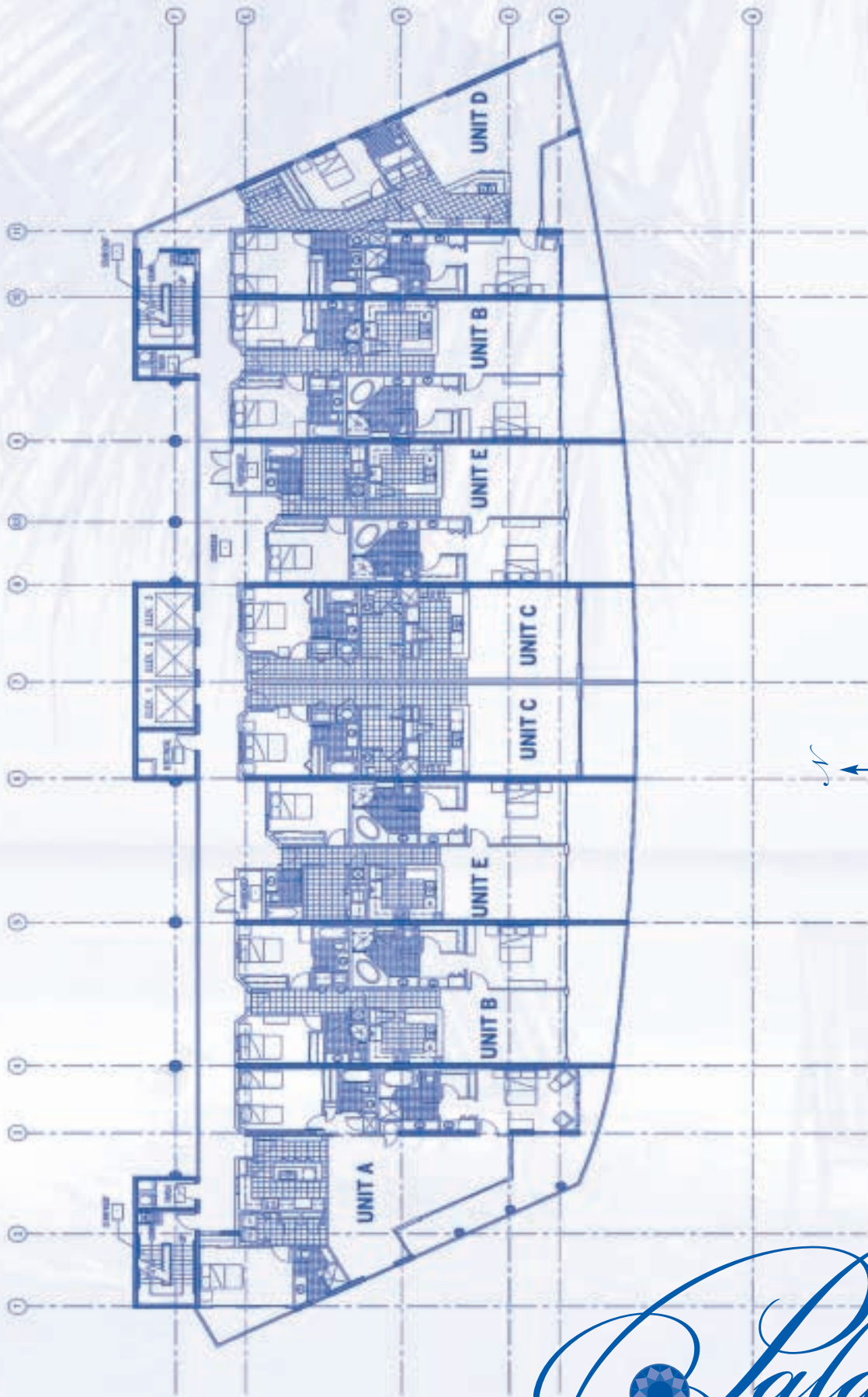
Palazzo



All dimensions and items listed are subject to change without notice.
Developer reserves the right to make any modifications as it deems necessary.

CONDOMINIUMS • PANAMA CITY BEACH, FL

TYPICAL FLOOR PLAN



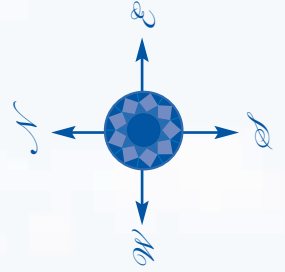
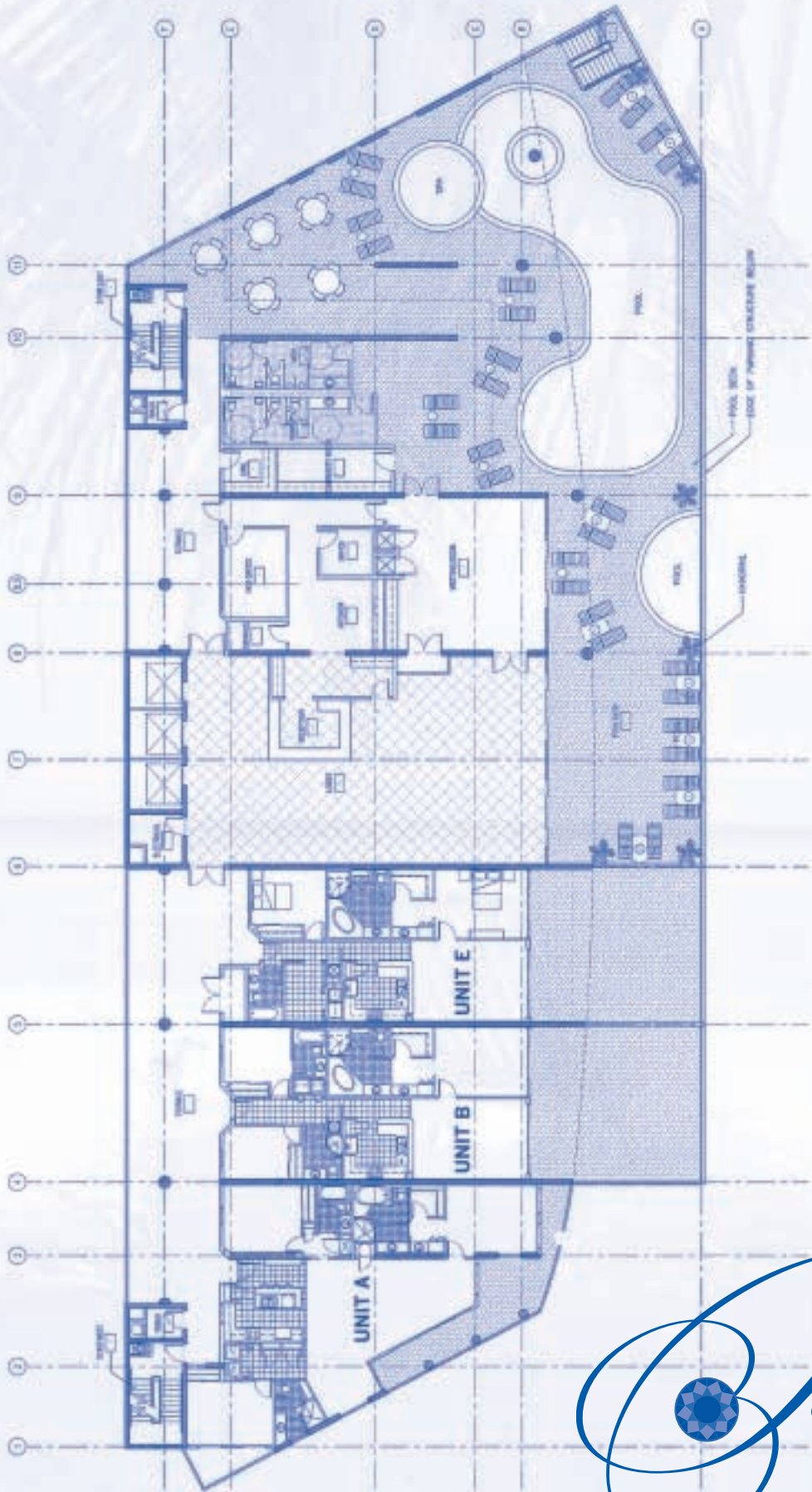
Palazzo



All dimensions and items listed are subject to change without notice.
Developer reserves the right to make any modifications as it deems necessary.

CONDOMINIUMS • PANAMA CITY BEACH, FL

LOBBY/POOL LEVEL - 1ST FLOOR LAYOUT



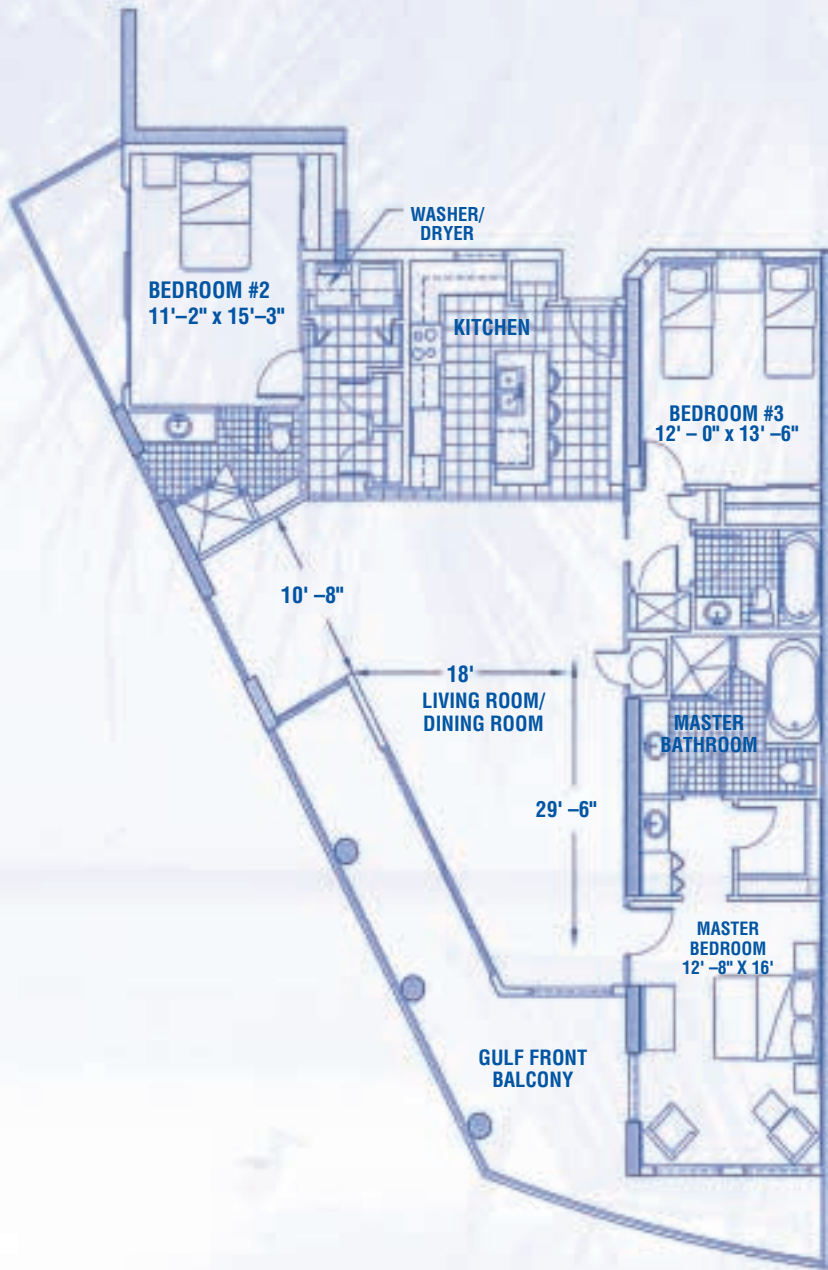
 *Palazzo*



All dimensions and items listed are subject to change without notice.
Developer reserves the right to make any modifications as it deems necessary.

CONDOMINIUMS • PANAMA CITY BEACH, FL

3 BEDROOM / 3 BATH WEST END - A PLAN 1,874 S.F.



INTERIOR UNIT FEATURES

- Decorative ceramic tile in foyer, kitchen and all baths

KITCHEN

- Kitchen features GE Profile® or equivalent appliances including:
 - Refrigerator with icemaker
 - Self-cleaning oven/range
 - Dishwasher
 - Microwave oven
 - Washer and dryer
- Raised panel kitchen cabinetry
- Granite kitchen countertops

LIVING ROOM

- 9' ceilings with 9' sliding glass doors in all units
- 10' ceiling on top floor penthouses and 1st floor
- Crown molding in living areas and master bedroom suites
- Wired for high speed access
- Ceiling fans in living areas and master bedroom suites
- Fully carpeted bedrooms and living areas

BATHS

- Cultured marble countertops in all baths
- Garden tub and separate shower featured in all units
- 44 external owners storage sold separately

-08 STACK

LIVING AREA	=	1,874 SF
LARGE BALCONY	=	345 SF
SMALL BALCONY	=	70 SF
<hr/>		
TOTAL	=	2,289 SF

Note: Square footage is measured centerline to centerline of demising walls, centerline of sliding glass doors, and all exterior edges. All calculations and dimensions are approximate and subject to change. End units measure exterior wall edge.

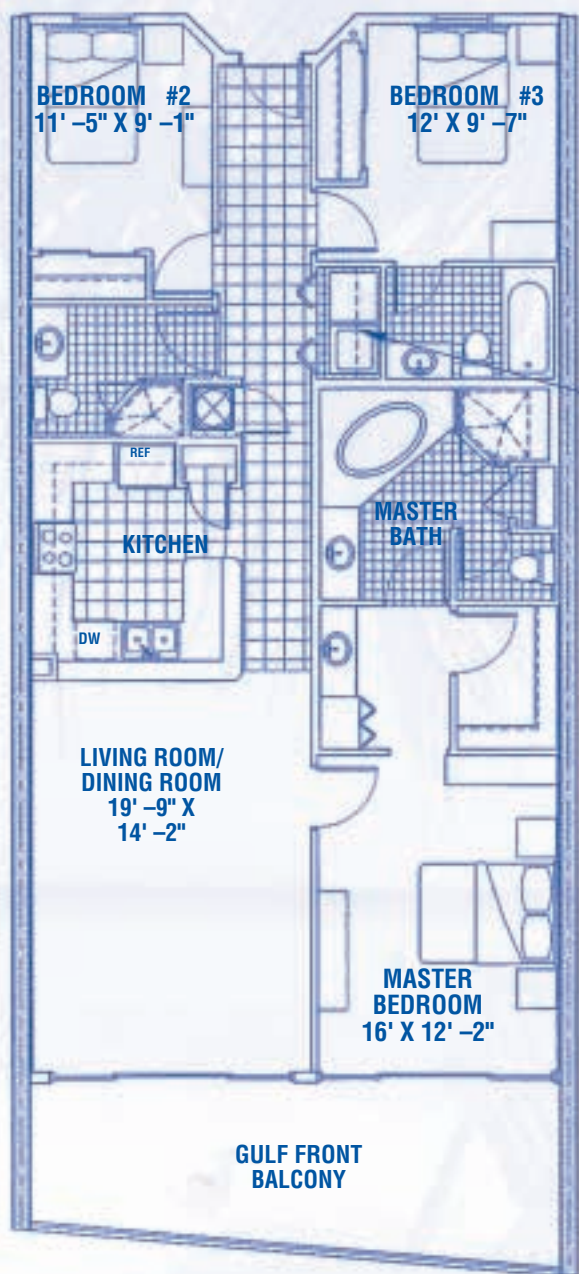
HORIZON
DESIGN LLC



All items listed and dimensions are approximate and subject to change without notice. Developer reserves the right to make any modifications as it deems necessary.

CONDOMINIUMS • PANAMA CITY BEACH, FL

3 BEDROOM / 3 BATH - B PLAN 1,475 S.F.



INTERIOR UNIT FEATURES

- Decorative ceramic tile in foyer, kitchen and all baths

KITCHEN

- Kitchen features GE Profile® or equivalent appliances including:
 - Refrigerator with icemaker
 - Self-cleaning oven/range
 - Dishwasher
 - Microwave oven
 - Washer and dryer
- Raised panel kitchen cabinetry
- Granite kitchen countertops

LIVING ROOM

- 9' ceilings with 9' sliding glass doors in all units
- 10' ceiling on top floor penthouses and 1st floor
- Crown molding in living areas and master bedroom suites
- Wired for high speed access
- Ceiling fans in living areas and master bedroom suites
- Fully carpeted bedrooms and living areas

BATHS

- Cultured marble countertops in all baths
- Garden tub and separate shower featured in all units

- 44 external owners storage sold separately

**-02 STACK and
-07 STACK**

LIVING AREA	=	1,475 SF
GULF FRONT BALCONY	=	246 SF
<hr/>		
TOTAL	=	1,721 SF

Note: Square footage is measured centerline to centerline of demising walls, centerline of sliding glass doors, and all exterior edges. All calculations and dimensions are approximate and subject to change. End units measure exterior wall edge.

**HORIZON
DESIGN LLC**

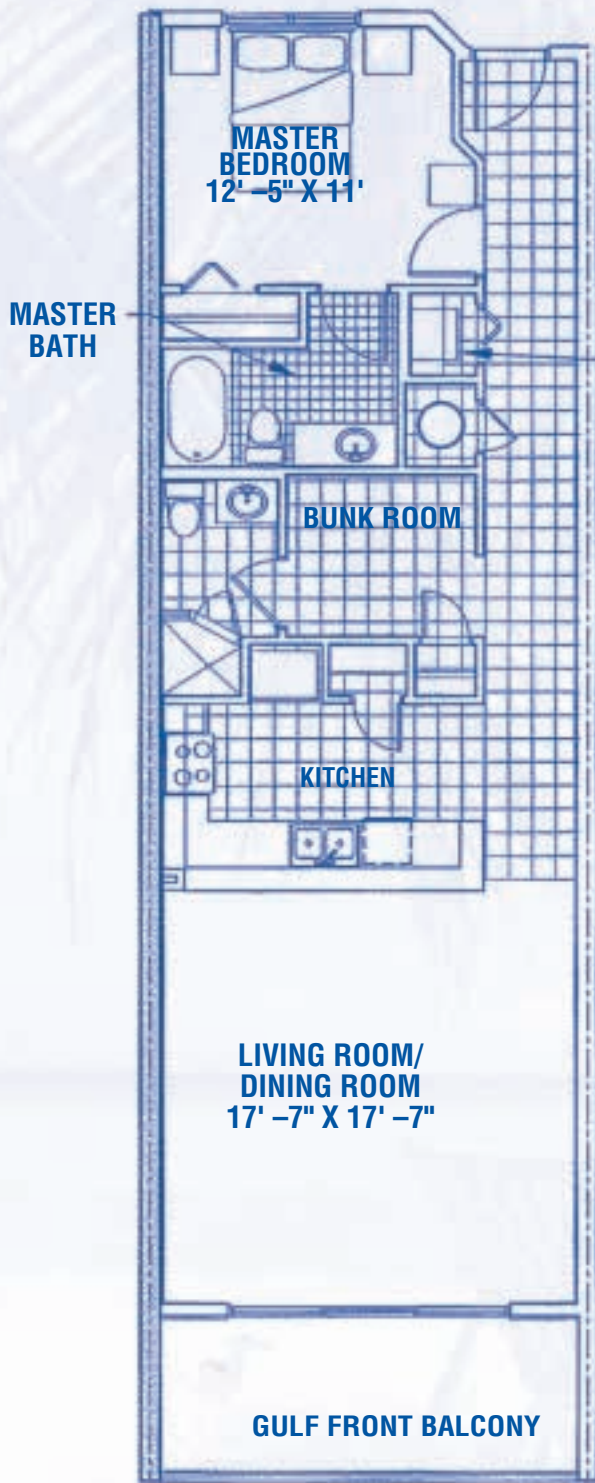


All items listed and dimensions are approximate and subject to change without notice. Developer reserves the right to make any modifications as it deems necessary.



CONDOMINIUMS • PANAMA CITY BEACH, FL

1 BEDROOM / 2 BATH W/BUNK AREA - C PLAN 1,026 S.F.



● INTERIOR UNIT FEATURES

- Decorative ceramic tile in foyer, kitchen and all baths

● KITCHEN

- Kitchen features GE Profile® or equivalent appliances including:
 - Refrigerator with icemaker
 - Self-cleaning oven/range
 - Dishwasher
 - Microwave oven
 - Washer and dryer
- Raised panel kitchen cabinetry
- Granite kitchen countertops

● LIVING ROOM

- 9' ceilings with 9' sliding glass doors in all units
- 10' ceiling on top floor penthouses and 1st floor
- Crown molding in living areas and master bedroom suites
- Wired for high speed access
- Ceiling fans in living areas and master bedroom suites
- Fully carpeted bedrooms and living areas

● BATHS

- Cultured marble countertops in all baths
- Garden tub and separate shower featured in all units
- 44 external owners storage sold separately

-04 STACK and
-05 STACK

LIVING AREA	=	1,026 SF
GULF FRONT BALCONY	=	170 SF
<hr/>		
TOTAL	=	1,196 SF

Note: Square footage is measured centerline to centerline of demising walls, centerline of sliding glass doors, and all exterior edges. All calculations and dimensions are approximate and subject to change. End units measure exterior wall edge.

HORIZON
DESIGN LLC



3 BEDROOM / 3 BATH EAST END - D PLAN 1,849 S.F.

INTERIOR UNIT FEATURES

- Decorative ceramic tile in foyer, kitchen and all baths

KITCHEN

- Kitchen features GE Profile® or equivalent appliances including:
 - Refrigerator with icemaker
 - Self-cleaning oven/range
 - Dishwasher
 - Microwave oven
 - Washer and dryer
- Raised panel kitchen cabinetry
- Granite kitchen countertops

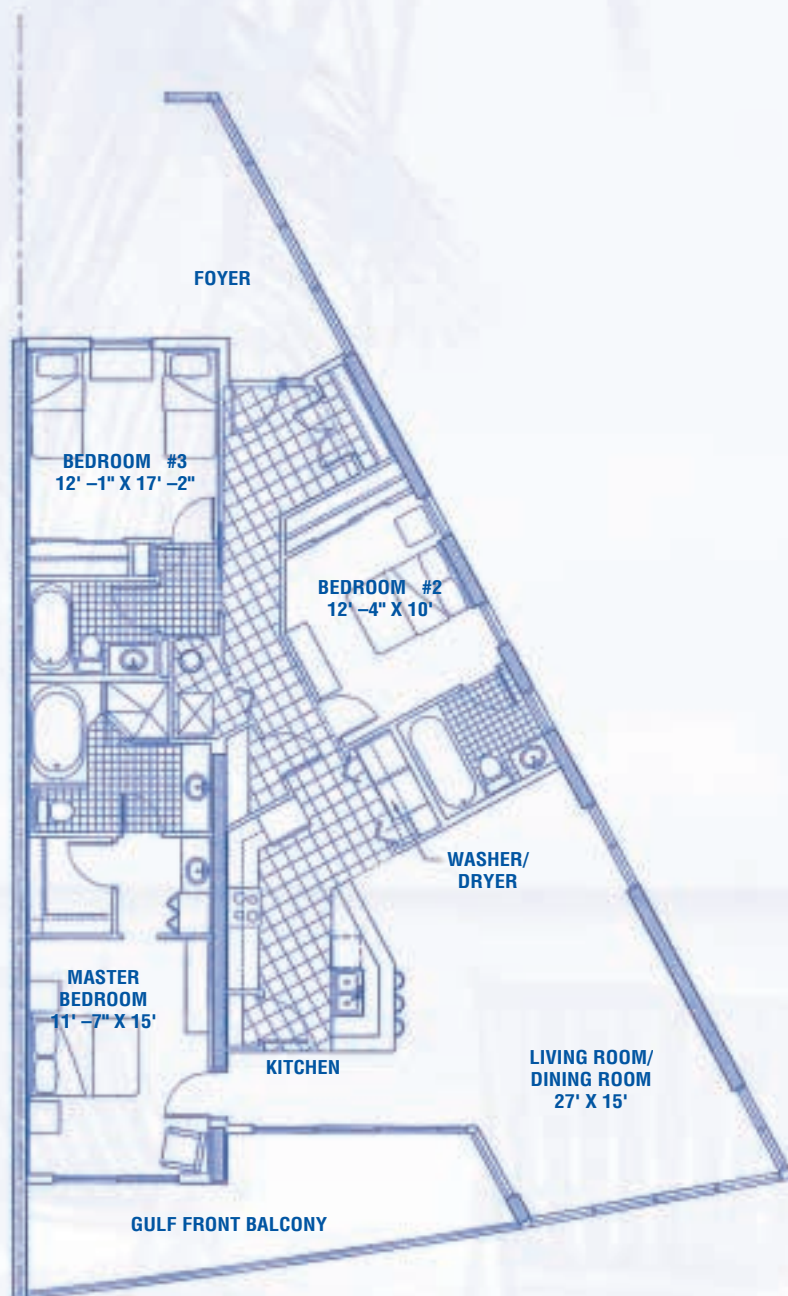
LIVING ROOM

- 9' ceilings with 9' sliding glass doors in all units
- 10' ceiling on top floor penthouses and 1st floor
- Crown molding in living areas and master bedroom suites
- Wired for high speed access
- Ceiling fans in living areas and master bedroom suites
- Fully carpeted bedrooms and living areas

BATHS

- Cultured marble countertops in all baths
- Garden tub and separate shower featured in all units
- 44 external owners storage sold separately

-01 STACK



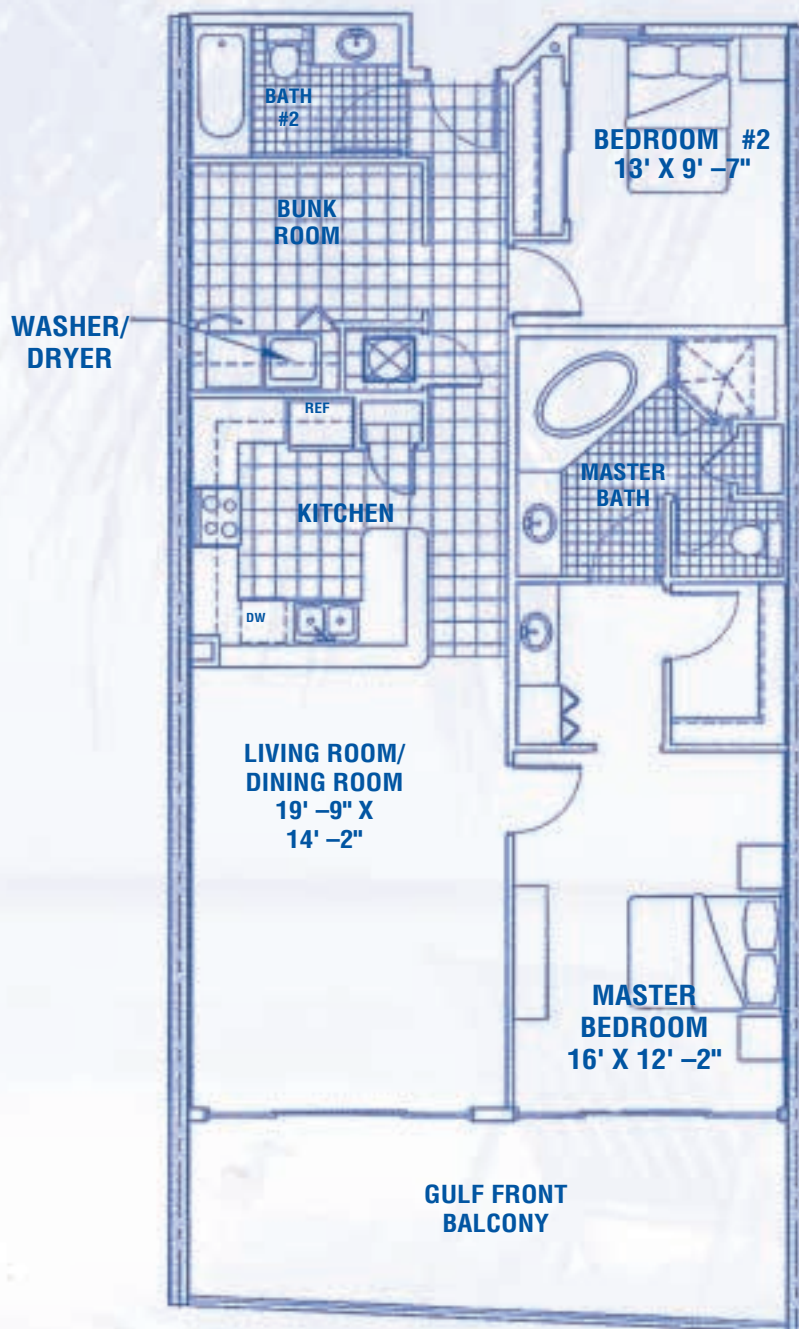
LIVING AREA	=	1,849 SF
GULF FRONT BALCONY	=	229 SF
<hr/>		
TOTAL	=	2,078 SF

Note: Square footage is measured centerline to centerline of demising walls, centerline of sliding glass doors, and all exterior edges. All calculations and dimensions are approximate and subject to change. End units measure exterior wall edge.

HORIZON
DESIGN LLC

Palazzo

2 BEDROOM / 2 BATH / W BUNK AREA - E PLAN 1,345 S.F.



● INTERIOR UNIT FEATURES

- Decorative ceramic tile in foyer, kitchen and all baths

● KITCHEN

- Kitchen features GE Profile® or equivalent appliances including:
 - Refrigerator with icemaker
 - Self-cleaning oven/range
 - Dishwasher
 - Microwave oven
 - Washer and dryer
- Raised panel kitchen cabinetry
- Granite kitchen countertops

● LIVING ROOM

- 9' ceilings with 9' sliding glass doors in all units
- 10' ceiling on top floor penthouses and 1st floor
- Crown molding in living areas and master bedroom suites
- Wired for high speed access
- Ceiling fans in living areas and master bedroom suites
- Fully carpeted bedrooms and living areas

● BATHS

- Cultured marble countertops in all baths
- Garden tub and separate shower featured in all units
- 44 external owners storage sold separately

-03 STACK and
-06 STACK

LIVING AREA	=	1,345 SF
GULF FRONT BALCONY	=	253 SF
<hr/>		
TOTAL	=	1,598 SF

Note: Square footage is measured centerline to centerline of demising walls, centerline of sliding glass doors, and all exterior edges. All calculations and dimensions are approximate and subject to change. End units measure exterior wall edge.

HORIZON
DESIGN LLC

